

Guideline for abstracts prepared for 1st International Conference on Plasma Nanotechnology and Science (IC-PLANTS2008)

A. Firstauthor¹, B. Secondauthor¹ and C. Thirdauthor²

¹Plasma Nanotechnology Research Center, Nagoya University, Nagoya 464-8603, Japan

²Department of Electrical Engineering and Computer Science, Nagoya University, Nagoya 464-8603, Japan

Email: ic-plants@plasma.engg.nagoya-u.ac.jp

1 General information

The total length, including figures and references, is one or two **A4 format pages**. The authors are responsible for the content and style of the contribution. The contributions will be reproduced without reduction or modification.

Each abstract should be submitted via the web site of IC-PLANTS2008:

<http://www.plasma.engg.nagoya-u.ac.jp/IC-2008/>

The submitted file must be a **Portable Document Format (PDF) document**, and an abstract prepared using Microsoft Word should be converted to a PDF file.

The deadline for receipt of one-page abstract is February 28, 2008.

2 Detailed information

The abstract should be typewritten on an A4 format papers. The total length, including figures and references, is one or two pages for invited and contributed papers. The pages must not be numbered. Margins are 2.5 cm for top, bottom, left, and right (if US letter format is used, set right at 3.1 cm). Place an indent of 6 mm at the beginning of each paragraph. However, no indents should be placed for the first paragraph after headings. The fonts should be Times New Roman (or similar fonts) except for the title and captions. Table 1 summarizes the fonts which should be used in the abstract.

Abstracts may include figures. Monochromatic figures are recommended since the Extended Abstract will contain no color-printed pages. A caption should be attached to each figure. An example of figures is shown in Fig. 1.

[1] J. W. Coburn and H. F. Winters, *J. Vac. Sci. Technol.* **16**, 391 (1979).

[2] R. W. B. Pearse and A. G. Gaydon, *The Identification of Molecular Spectra* (John Wiley & Sons, New York, 1976).

Table 1 Types and sizes of fonts which should be used in the abstract.

Place	Type and size
Title	Arial 16, bold
Authors' name	Times 12, normal
Affiliations	Times 10, italic
E-mail	Times 10, normal
Main text	Times 10, normal
Figure and table captions	Arial 9, normal
Major headings	Times 11, bold
Subheadings	Times 10, italic

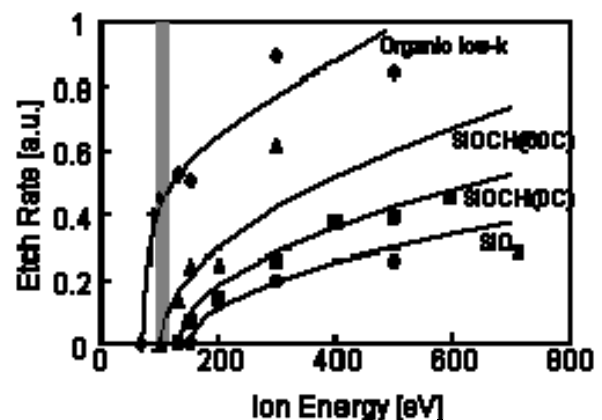


Fig. 1 An example of figures.